

CON-Line[®] Big W Dual 65 - 75"

Item no.: 2769

Media column, floor-wall mounting

The CON-Line Big W Dual 65 - 75" is a media column for floor-wall mounting. Due to its compact design, it can be placed almost anywhere.

It is suitable for two screens side-by-side with a size from 65 - 75" | 165 - 191 cm. The included, fixed VESA mount can be fitted from 200 x 200 mm min. up to 900 x 800 mm max.. The screens are mounted in landscape orientation.

The removable AV mounting panel (2 pcs) makes the installation quick and easy. Ventilation grilles in the corpus provide sufficient ventilation.

AV accessories are protected behind the front panel with sliding door incl. soft close.

A retractable security lock on the side of the corpus provide additional security.

Due to the space saving floor-wall mounting not much space is required. Levelling feet mounted underneath the corpus provide levelling if required.

The maximum load is 2x 75 kg.

Other colour or decor variants (corpus) are available on request - also as unique piece.



Retractable security lock



Easy assembly thanks to AV mounting panel (2 pcs)



Accessories are protected inside the corpus

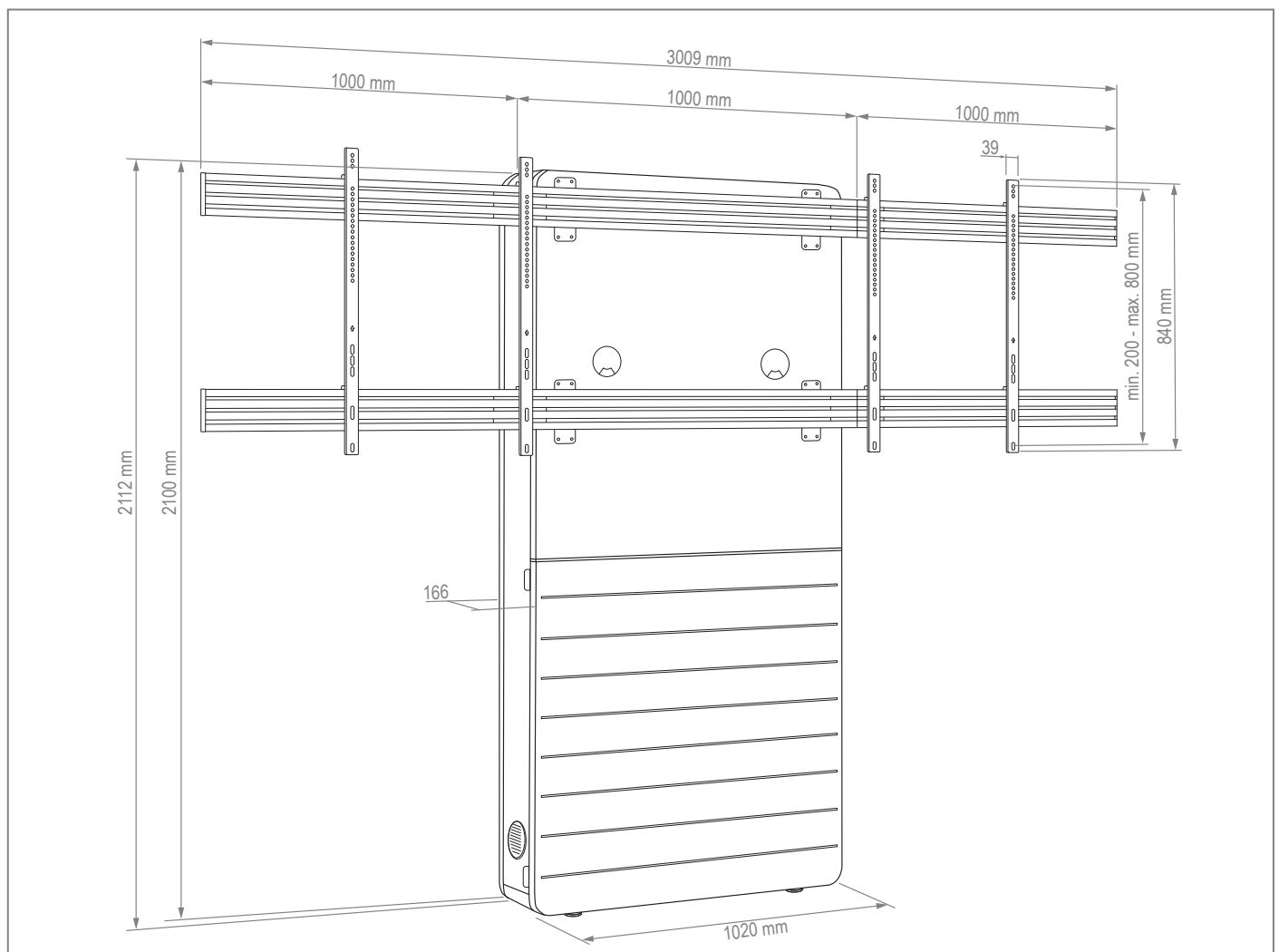


CON-Line[®] Big W Dual 65 - 75"

Item no.: 2769

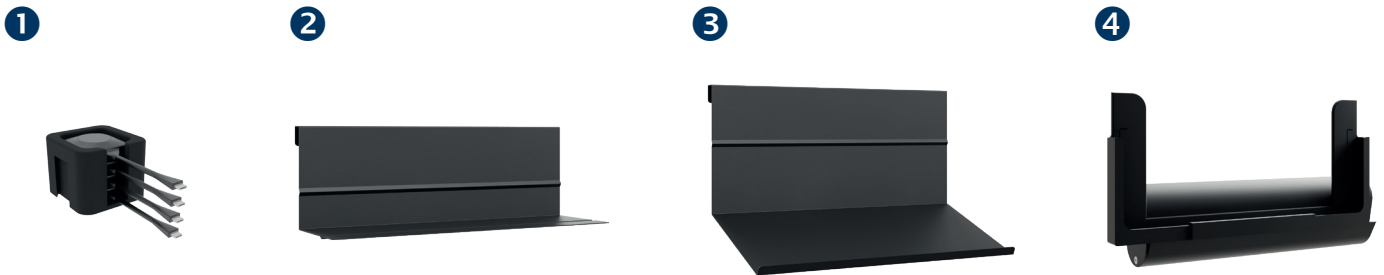
Media column, floor-wall mounting

- Media column for floor-wall mounting
- Suitable for two screens side-by-side
- 2x 65 - 75" | 165 - 191 cm
- Landscape orientation
- VESA, min. 200 x 200 - max. 900 x 800 mm
- Frontcover with sliding door incl. soft-close
- Space saving floor-wall mounting
- Levelling feet for level compensation
- Ventilation grilles in the corpus
- AV accessories are protected from unauthorised access inside the furniture corpus
- Easy assembly thanks to removable AV mounting panel (2 pcs)
- Retractable security lock on the side of the corpus
- 2x 75 kg load, max.
- Colour: white



Accessories CON-Line®

Optional accessories for CON-Line and CON-Line Big



Item no.:	Item name	Function & suitability	Illustration	Colour
2935	CON-Line® Dongle Tray	Dongle tray, suitable for all versions of the CON-Line® and CON-Line® Big media columns	1	schwarz
2932	CON-Line® AV Shelf	AV Shelf, suitable for all versions of the CON-Line® and CON-Line® Big media columns	2	
2933	CON-Line® Laptopholder	Laptopholder, suitable for all versions of the CON-Line® and CON-Line® Big media columns	3	
2882	CON-Line® Tableholder	Tableholder, universal, suitable for all versions of the CON-Line® and CON-Line® Big media columns	4	

Accessories CON-Line®

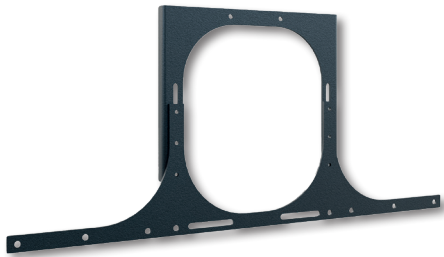
Optional accessories for CON-Line and CON-Line Big



Item no.: 2286



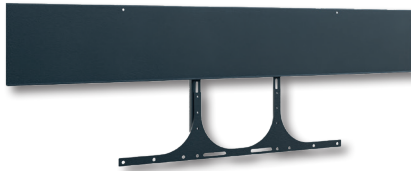
Item no.: 2918



Item no.: 2931



Item no.: 2278



Item no.: 2919



Item no.: 2282

Item no.:	Item name	Recommended screen size	VESA	Function & suitability	Illustration	Colour
2286	Poly Display Adapter 55 - 75"	55 - 75" 140 - 191 cm	max. 800 mm	Adapter for Poly Studio, Poly Studio X50 and Poly Studio X70	①	schwarz
2287	Poly Display Adapter 75 - 86"	75 - 86" 191 - 218 cm		-		
2918	Poly P15, E70, X30 Display Adapter 55 - 75"	55 - 75" 140 - 191 cm		Adapter for Poly Studio P15, Poly Studio E70 and Poly Studio X30	②	
2931	Logitech Rally Bar & Rally Bar Mini Adapter 55 - 86"	55 - 86" 140 - 218 cm		Adapter for Logitech Rally Bar and Logitech Rally Bar Mini	③	
2937	Logitech Rally Bar Huddle Adapter 55 - 75"	55 - 75" 140 - 191 cm		Adapter for Logitech Rally Bar Huddle	-	
2278	Meetup Display Adapter 55 - 75"	55 - 75" 140 - 191 cm		Adapter for Logitech Meetup	④	
2279	Meetup Display Adapter 75 - 86"	75 - 86" 191 - 218 cm		-		
2919	Nureva HDL 300 Adapter 55 - 75"	55 - 75" 140 - 191 cm		Adapter for Nureva HDL 300	⑤	
2920	Nureva HDL 300 Adapter 75 - 86"	75 - 86" 191 - 218 cm		-		
1925	Cisco Room-Kit Adapter 55 - 75"	55 - 75" 140 - 191 cm		-		
2900	Cisco Room-Kit Adapter 75 - 86"	75 - 86" 191 - 218 cm		Adapter for Cisco Webex Room Kit Mini, Cisco Webex Room Kit, Cisco Webex Room Kit Plus and Cisco Room Kit EQ	-	
2282	Cisco Room-Kit Adapter Dual	55", 65", 75" 140 cm, 165 cm, 191 cm		⑥		